

# TIIG

INJURY SURVEILLANCE IN THE NORTH WEST OF ENGLAND

## Warrington Hospital Emergency Department Monthly Bulletin: April 2011 to March 2012

This bulletin provides a breakdown of all injury attendances at Warrington Hospital Emergency Department (ED) between April 2011 and March 2012.

Between April 2011 and March 2012 there were 38,007 ED attendances. This report is inclusive of data from Halton Minor Injuries Unit (n=192). Injury attendances peaked in March (n=3,674), with December (n=2,528) having the least number of injury attendances (Figure 1).

There were slightly more male injury attendances than female presenting at Warrington Hospital ED (56%).

Figure 2 presents the age group of injury attendances. Across the whole year, injury attendances were highest for individuals aged 30-59 years (33%).

Table 1 details the injury group of injury attendances. The majority of injury attendances were classified as other injury (77%) and 8% were recorded as a sports injury and road traffic collision (RTC) respectively.

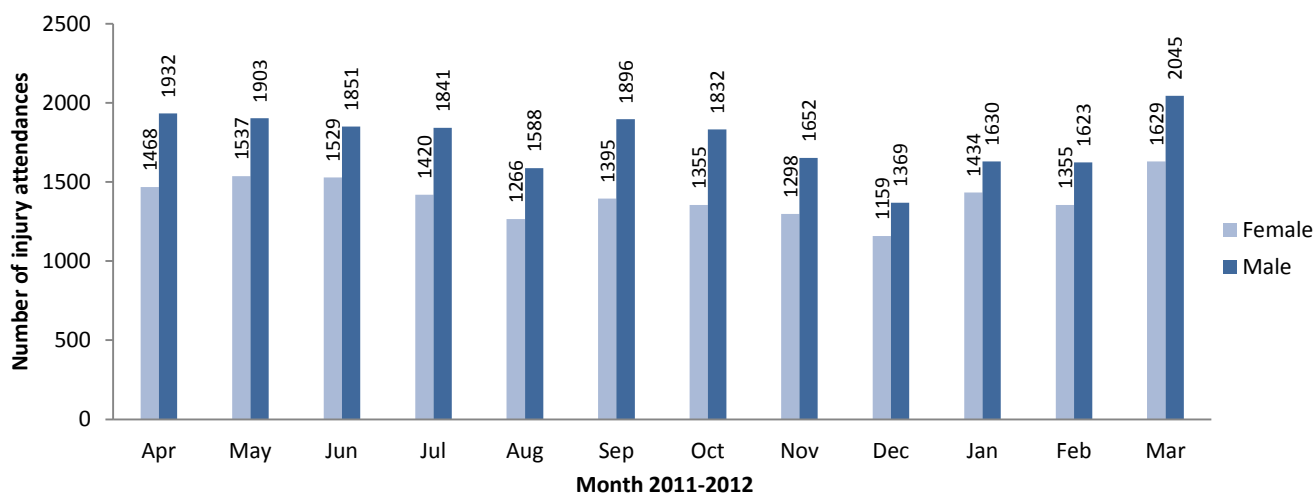
Table 2 illustrates the source of referral for patients presenting with injuries. The majority (95%) of injury attendees self-referred.

Table 3 presents injury attendances by location of incident. Four in ten (40%) were recorded as at home and 6% were reported as being located at work.

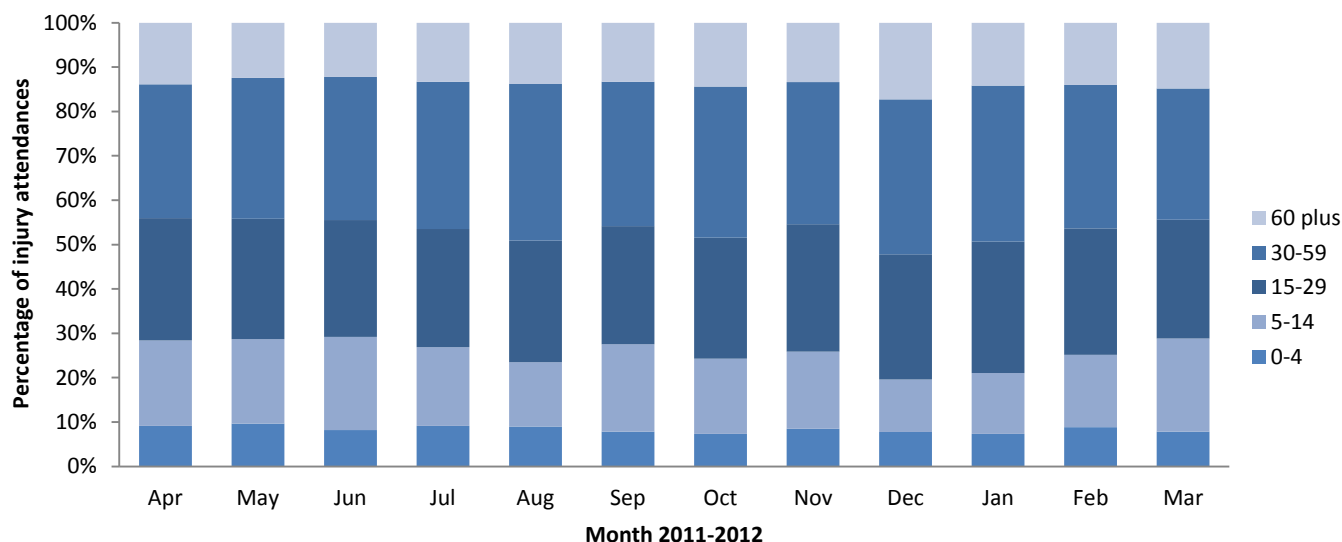
Table 4 shows the discharge destination of injury attendances. Thirty-four per cent of attendees were discharged without requiring any follow-up treatment and almost a third (31%) were discharged requiring follow-up treatment by a General Practitioner (GP). Just over one in ten were admitted to the hospital (11%).

Assault attendees presenting at Warrington Hospital ED between April 2011 and March 2012 were mainly male (72%) and over half (54%) were aged between 15 and 29 years. Table 5 shows that almost one quarter (24%) of assaults occurred in a home, one in ten occurred in a public place and 4% at a place of work

Figure 1: Gender of injury attendances by month, April 2011 to March 2012



**Figure 2: Age group of injury attendances by month, April 2011 to March 2012**



**Table 1: Injury attendances by injury group, April 2011 to March 2012\***

Injury group	Apr	May	Jun	Jul	Aug	Sept	Oct	Nov	Dec	Jan	Feb	Mar	Total	%
Other injury	2600	2702	2645	2577	2263	2563	2296	2157	1991	2384	2388	2852	29418	77
Sports injury	320	271	254	217	179	308	345	325	65	199	195	381	3059	8
Road traffic collision	238	238	263	245	201	226	311	255	272	277	240	254	3020	8
Assault	173	146	130	159	135	135	157	154	139	147	94	135	1704	5
Deliberate self-harm	69	83	88	63	76	59	78	59	61	57	61	52	806	2
<b>Total</b>	<b>3400</b>	<b>3440</b>	<b>3380</b>	<b>3261</b>	<b>2854</b>	<b>3291</b>	<b>3187</b>	<b>2950</b>	<b>2528</b>	<b>3064</b>	<b>2978</b>	<b>3674</b>	<b>38007</b>	<b>100</b>

\* Due to small numbers firework injury (n=7) has been included in the other injury group.

**Table 2: Injury attendances by source of referral, April 2011 to March 2012<sup>^1</sup>**

Source of referral	Apr	May	Jun	Jul	Aug	Sept	Oct	Nov	Dec	Jan	Feb	Mar	Total	%
Self-referral	2894	3013	3105	3159	2753	3223	3120	2876	2468	2974	2885	3539	36009	95
Emergency services	414	369	234	68	72	30	40	61	36	47	33	53	1457	4
A&E/ Other HCP	75	37	18	<25	10	17	9	<15	14	28	38	61	338	1
GP	***	9	<20	11	14	13	12	***	10	<20	17	12	133	0
Work	6	***	6	0	***	***	***	0	0	0	***	6	35	0
Police	5	***	0	***	***	***	0	0	0	***	***	***	18	0
Educational establishment	***	***	***	0	0	***	***	0	0	0	0	***	12	0
Other	***	***	0	0	0	***	***	0	0	0	0	0	5	0
<b>Total</b>	<b>3400</b>	<b>3440</b>	<b>3380</b>	<b>3261</b>	<b>2854</b>	<b>3291</b>	<b>3187</b>	<b>2950</b>	<b>2528</b>	<b>3064</b>	<b>2978</b>	<b>3674</b>	<b>38007</b>	<b>100</b>

<sup>^</sup> A&E = Accident & Emergency, HCP = Health Care Provider, GP = General Practitioner

**Table 3: Injury attendances by incident location, April 2011 to March 2012<sup>1</sup>**

Incident Location	Apr	May	Jun	Jul	Aug	Sept	Oct	Nov	Dec	Jan	Feb	Mar	Total	%
Other	1471	1325	1359	1156	1257	1287	1436	1297	884	1203	1110	1628	15413	41
Home	1068	1224	1118	1279	1132	1317	1179	1139	1326	1465	1412	1439	15098	40
Non specified	412	389	394	320	191	217	191	114	70	48	49	69	2464	7
Work	206	199	212	169	<160	<180	186	169	142	167	173	200	2154	6
Educational establishment	87	162	154	125	***	<190	145	183	68	148	156	263	1680	4
Public place	156	141	143	212	116	108	50	48	38	33	78	75	1198	3
<b>Total</b>	<b>3400</b>	<b>3440</b>	<b>3380</b>	<b>3261</b>	<b>2854</b>	<b>3291</b>	<b>3187</b>	<b>2950</b>	<b>2528</b>	<b>3064</b>	<b>2978</b>	<b>3674</b>	<b>38007</b>	<b>100</b>

<sup>1</sup> \*\*\* Please note that all numbers less than five have been suppressed in line with patient confidentiality and if there is only one number less than five in a category then two numbers will be suppressed at the next level (e.g. <6) in order to prevent back calculations from totals.

**Table 4: Injury attendances by discharge destination, April 2011 to March 2012<sup>^, 2</sup>**

Discharge	Apr	May	Jun	Jul	Aug	Sept	Oct	Nov	Dec	Jan	Feb	Mar	Total	%
Discharged - did not require follow up treatment	1113	1197	1126	1003	925	1184	1136	1126	799	995	1024	1267	12895	34
Discharged to follow up provided by GP	1106	1113	1016	1123	887	1016	913	819	813	1011	899	1089	11805	31
Admitted to the hospital	324	325	339	310	340	367	404	337	388	353	348	360	4195	11
Referred to out-patient clinic	307	319	360	271	274	279	265	253	200	296	272	415	3511	9
Referred to fracture clinic	330	267	323	291	235	271	268	235	197	229	252	316	3214	9
Left department before being treated	116	132	110	158	102	93	105	94	65	102	87	128	1292	3
Transferred to other HCP	<95	<80	94	89	<85	70	89	<75	<55	73	<90	<90	955	3
Referred to A&E clinic	12	11	9	14	7	11	***	13	9	***	11	11	116	0
Died in department	***	***	***	***	***	0	***	***	5	***	0	***	17	0
Other	0	0	***	***	0	0	***	0	***	0	***	0	7	0
<b>Total</b>	<b>3400</b>	<b>3440</b>	<b>3380</b>	<b>3261</b>	<b>2854</b>	<b>3291</b>	<b>3187</b>	<b>2950</b>	<b>2528</b>	<b>3064</b>	<b>2978</b>	<b>3674</b>	<b>38007</b>	<b>100</b>

<sup>^</sup> A&E = Accident & Emergency, HCP = Health Care Provider, GP = General Practitioner

**Table 5: Location of assault for assault attendances, April 2011 to March 2012<sup>1</sup>**

Incident location	Apr	May	Jun	Jul	Aug	Sept	Oct	Nov	Dec	Jan	Feb	Mar	Total	%
Other	89	65	55	61	60	65	68	86	75	85	58	86	853	50
Home	35	40	31	39	36	30	44	40	37	32	22	27	413	24
Non specified	26	19	18	19	18	10	25	8	10	11	0	6	170	10
Public place	16	16	15	<30	<20	16	<15	<10	11	<10	<10	10	165	10
Work place	***	***	6	10	***	9	5	9	6	8	7	***	73	4
Educational establishment	***	***	5	***	0	5	***	***	0	***	***	***	30	2
<b>Total</b>	<b>173</b>	<b>146</b>	<b>130</b>	<b>159</b>	<b>135</b>	<b>135</b>	<b>157</b>	<b>154</b>	<b>139</b>	<b>147</b>	<b>94</b>	<b>135</b>	<b>1704</b>	<b>100</b>

Published June 2014,  
 Stuart Cole (TIIG researcher)  
 Centre for Public Health, Faculty of Education, Health and Community, Liverpool John Moores University  
 2<sup>nd</sup> Floor, Henry Cotton Campus, 15-21 Webster Street, Liverpool, L3 2ET  
 Contact: Jennifer Brizell, Tel: 0151 231 4500, Email: [j.s.brizell@ljmu.ac.uk](mailto:j.s.brizell@ljmu.ac.uk)  
 Website: [www.tiig.info](http://www.tiig.info)

<sup>2</sup> \*\*\* Please note that all numbers less than five have been suppressed in line with patient confidentiality and if there is only one number less than five in a category then two numbers will be suppressed at the next level (e.g. <6) in order to prevent back calculations from totals.